

2017 NZSEA FINALISTS ANNOUNCED

The finalists for 2017 New Zealand Spatial Excellence Awards were announced in Wellington last week. Now in its fourth year, the 2017 awards attracted over 60 entries from a variety of different organisations and individuals across New Zealand using spatial technology to provide valuable benefits in such varied areas as Agriculture, Banking, Transportation, Conservation and Local Government.



Last year's Supreme Winner Sean Audain, Wellington City Council

Tickets for gala dinner, where the awards are announced at Te Papa Tongarewa are available.

- [Book your seat or table for the dinner](#)
- [Read about the projects.](#)

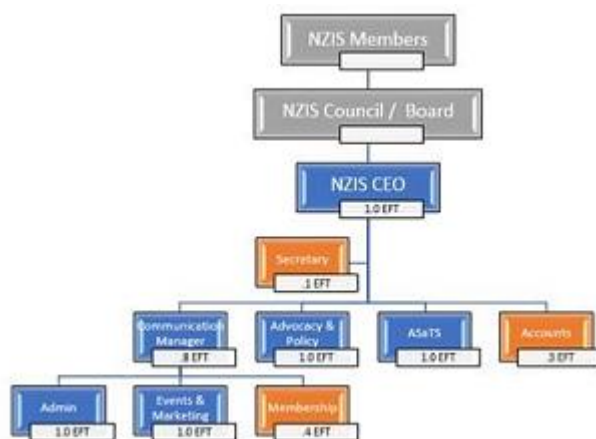
NZIS NEWS

New Council Member Sought

NZIS Council will shortly be advertising for a new council member. Watch out for the email to all members coming soon.

National Office Restructure

Following an independent review of CPD and the resignation of the Relationship Manager earlier this year, the NZIS CEO was tasked by the Board with developing a staffing structure that would offer the greatest certainty that the strategic objectives as stated in the 2015 to 2020 plan, would be achieved. The structure was formulated through August and September and finalised in October. Here is a breakdown of the new structure:



The new structure will have four new full-time and part-time positions.

Further information is available [here](#) .

CONTINUING PROFESSIONAL DEVELOPMENT

Updating Your CPD Records

It's time to update your CPD points in your online Dashboard. As per previous years, one CPD point equates to one hour of learning.

NZIS has also completed an internal check of all members that have attended NZIS training booked through the website and all these CPD points have been automatically

updated for you including this year's conference. A new CPD category has also been added for "Mentoring and Supervising".

Coming Up in October and November

Webinars: Introduction to SNAP Software - Part 1 and 2

The NZIS Positioning Stream has developed a two-part webinar aimed at those interested in learning more about how to use LINZ's freely-available SNAP software.

- Part 1 webinar- Thursday 12 October, 1:00 pm - 2:30pm: [Book Part 1 now](#)
- Part 2 webinar- Thursday 26, October 1:00 pm - 2:30pm: [Book Part 2 now](#)

Traffic Management Training in Auckland and Christchurch

Candidates who pass this course are registered with the NZ Transport Agency.

Auckland sessions:

- Session One – Monday 16 October: [Book Now](#)
- Session Two – Tuesday 17 October: [Book Now](#)
- Session Three – Wednesday 18 October: [Book Now](#)
- Session Four – Thursday 19 October: [Book Now](#)

Christchurch sessions:

- Session One – Tuesday 7 November: [Book Now](#)
- Session Two – Wednesday 8 November: [Book Now](#)
- Session Three – Thursday 9 November: [Book Now](#)
- Session Four – Friday 10 November: [Book Now](#)

GNSS/GPS Seminar for Cadastral Surveying - Auckland and Christchurch

With GNSS/GPS units now being used extensively by surveyors, this is a good session to learn about the best practice techniques in using GNSS/GPS reliably in cadastral surveys.

- Auckland session, Monday 20 November - [Book Now](#)
- Christchurch session, Tuesday 21 November - [Book now](#)

NEW CAREER OPPORTUNITIES LISTED THIS MONTH

NZIS's only preferred recruiter

**Multiple job opportunities NZ-wide.
Contact us now for a confidential chat
and FREE salary check.**

Contact Mark Fisher:
021 347 445 | mark@eighty4recruitment.com

100% NEW ZEALAND
OWNED AND OPERATED

Eighty4
— RECRUITMENT —

- [Land Development Specialist](#), Churchill LDS, Auckland
- [Land Surveyor](#) , Hollier Greig, Auckland
- [Registered Professional Surveyor / Licensed Cadastral Surveyor](#), Frear Surveyors
- [Qualified Surveyor](#), Cheal Consultants Ltd, Taupo, Rotorua or Hamilton
- [Event and Marketing Coordinator](#), NZIS
- [Advocacy and Policy Coordinator](#), NZIS
- [Membership Coordinator - Part-Time](#), NZIS
- [Licensed Cadastral Surveyor and Experienced Survey Technician](#), Reyburn & Bryant.



POSITIONING AND MEASUREMENT STREAM

Featured in this month's article:

- The stream is collecting information about our performance and collective requirements to date. Please take a few minutes to respond with your valuable feedback and suggestions. The survey is accessible here:
<https://www.surveymonkey.com/r/K7HV3NT>
- The first of two SNAP webinars is being held 12 October. [Read more and book your place.](#)

[Read the full article.](#)

SURPEG PLASTIC BOUNDARY PEG - DESIGNED & MANUFACTURED IN NZ

Order at www.surpeg.com Ph +64 2136984

