

[View this email in your browser](#)



[UPDATE DETAILS](#)



Thank you

We recently completed this year's membership survey where we asked what you want from your membership. I want to give a big thanks to everyone who took time to complete the survey. The information gathered will be invaluable to our planning.

All of our projects and activities are driven by the annual Letter of Expectation prepared by the Council. The 2022 letter is getting close to being released and this is informed by member feedback. The Council, made up of Professional Stream representatives, works incredibly hard to ensure the professional needs of members are reflected in all their activities.

We are in the middle of a busy time for CPD and education, which also happens to be the theme of the recently published *Surveying+Spatial* magazine. Have a read of this - it includes some great articles and information on training and upskilling opportunities. The April Professional Exams have just been conducted and congratulations to all those who took part in this important process. We are also now taking registrations for the Cadastral Law Exam scheduled for June and I'm pleased to advise you that the Certification Programme pilot is in full swing with the appointment of Assessors underway.

The 2022 conference programme has just been released and the line-up is looking great! Rotorua is an ideal location giving the event a real 'regional' focus. The super-early-bird registration has just opened ensuring big savings for everyone who takes advantage of this offer.

In keeping with the CPD theme - keep a look out for the webinars coming up shortly.

Ashley Church, CE.



TURNING UP THE HEAT

SURVEY AND SPATIAL NEW ZEALAND

ROTORUA
1 - 3 AUGUST 2022

SUPER EARLY-BIRD REGISTRATION IS OPEN

Save over \$350!

The theme, 'Turning Up The Heat', will focus on the future and challenges in regional areas, which include climate change and developments outside of Auckland.

The full [programme](#) is now available and please keep an eye on the S+SNZ Conference website which is being updated as details come to hand surveyspatialnzconference.org.

[REGISTER HERE](#)

CERTIFICATION PATHWAYS UPDATE

Invitation to Become an Assessor



Preparation for the Pilot of our new *Certification in Land Development Engineering and Engineering Surveying* is now well under way. We are working with Branches and Stream Leads to recruit Assessors nationwide, with the aim of having Assessors from as many of the regions represented by our

Branches as possible. As part of the application process, Assessors will be the first candidate pool to go through the Certification Assessment of Competency.

Becoming an Assessor for our pilot, is a ground breaking opportunity that will make a significant impact on our profession and we strongly encourage anyone who is keen to be part of this initial pilot, to email an expression of interest through to jayne@surveyspatialnz.org



MARCH SURVEYING+SPATIAL MAGAZINE

Read the [March magazine](#) with a focus on the latest CPD and education information.



Hydrography - contributing to the United Nations Ocean Decade

World Hydrography Day Seminar
Wellington, 8th July 2022

WORLD HYDROGRAPHY DAY SEMINAR - 8 July 2022

For those who are interested in the World Hydrography Day, a one day seminar following the IHO theme "Hydrography - contributing to the United Nations Ocean Decade" is being held 8 July. Check [out here](#) for more information.

ADVOCACY



Connecting With Councils

In preparation for the pilot and launch of our new Certification Framework, we are linking arms with our Branches and reaching out to all local authorities and councils within their Branch territory. Significant progress has been made with Auckland Council giving initial written notification that our new Certification satisfies their regulatory engineering requirements and that they will be recommending to their GM that they move to officially endorse our new framework and assessments of competency.

Recently, Whangarei District Council has included our *Land Development Engineering Certification* under the *Suitably Qualified and Experienced Professionals (SQEP)* section of their latest Engineering Standards and these are now on their website. The next version of their Code will be up in November 2022 and will include our new Engineering Surveying Certification.

Queenstown Lakes District Council (QLDC) are in the final stages of writing our new Certification into their latest Code of Practice which is going out for public consultation later in April.

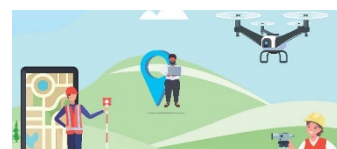
A number of Local Councils are in varying stages of reviewing their Codes of Practice and Design Manuals. We will be reporting the inclusion of our New Certification as it happens. Progress is encouraging to date, showing us that what we have developed is fit for purpose and meets their criteria.



ARE YOU MAXIMISING YOUR MEMBERSHIP LISTING?

The S+SNZ website has several [member directories](#) that can be used as a tool to promote yourself and your business. You can control your privacy settings and add a business profile. Log-in to www.surveyspatialnz.org.nz, click on **DASHBOARD** and use the menu to add a profile and change your privacy settings.

CONTINUING PROFESSIONAL DEVELOPMENT



**PROFESSIONAL
PRACTICE CADASTRAL
CORNER**

REGISTRATION IS OPEN FOR THE JUNE CADASTRAL LAW EXAM

Register for the exam being held in June on the [Upcoming Events](#) page. Registration is open until 19 May 2022.

[Register here](#)

WEBINAR COMING UP - POST 2022 BUDGET ANALYSIS WITH TONY ALEXANDER

Join Economist, Tony Alexander, for a 'hot off the press' [post-budget review and discussion](#) on the budget, 20 MAY 2022.

[Register Here](#)

Read the latest Cadastral Stream's article featuring CSD corrections and adjustments. This item and earlier articles are available [here](#).

[Cadastral Corner](#)

CAREER OPPORTUNITIES



SURVEY AND SPATIAL'S ONLY PREFERRED RECRUITMENT PARTNER

**Multiple job opportunities NZ-wide.
Contact us now for a confidential
chat & FREE salary check.**

Contact Sean Buck:
027 587 5726
sean@eighty4recruitment.com

Eighty4
— RECRUITMENT —

 Survey
and Spatial
New Zealand
Diamond Partner

Recently listed career opportunities in the sector:

- [Licensed Cadastral Surveyor or Technician](#), Planscapes Ltd, Nelson
- [Licensed Cadastral Surveyor](#), KW Consultants
- [Licensed Cadastral Surveyor](#), Survey Gisborne
- [Survey Technician or Licensed Cadastral Surveyor](#), Cato Bolam, Henderson
- [Survey Technician or Licensed Cadastral Surveyor](#), Cato Bolam, Whangarei
- [Survey Technician or Licensed Cadastral Surveyor](#), Cato Bolam, Orewa
- [Engineering Surveyor](#), Eighty4 Recruitment, Auckland / Hawkes Bay

See the full list of opportunities on the [Jobs Board](#).

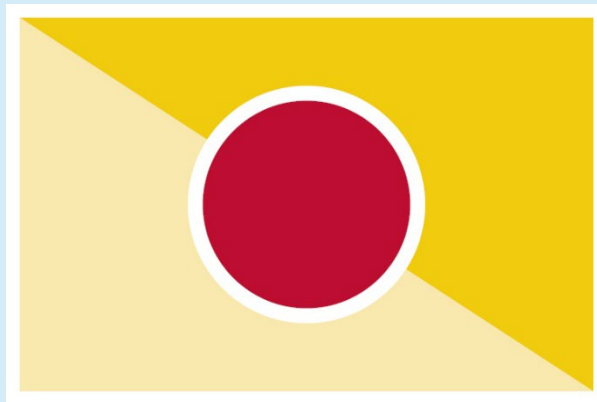


LEGISLATIVE CASE NOTES

The [April](#) Case Notes covering diverse situations associated with subdivision, development and land use activities from around the country are available.

Read the full notes and earlier case notes [library](#) [here](#).

COVID-19 INFORMATION AND RESOURCES



COVID-19 TRAFFIC LIGHT INFORMATION

For more information on how to operate your business during the current traffic light settings, visit covid19.govt.nz

Information is also available at business.govt.nz and the S+SNZ Covid-19 [resource page](#).

Please take care and stay safe.





Copyright © | Survey and Spatial New Zealand | All rights reserved.

Our Mailing Address: PO Box 5304, Lambton Quay, Wellington 6145. www.surveyspatialnz.org

Want to change how you receive these emails?

You can [update your preferences](#) or [unsubscribe from this list](#).