

[View this email in your browser](#)



[UPDATE DETAILS](#)



Congratulations to this year's award recipients.

Congratulations to those of you who received awards at the recent 'Turning up the Heat' Conference, in Rotorua. The Conference certainly lived up to all of my expectations – and yours too, if your survey feedback is any sort of guide!

This year our 260 delegates experienced a wide variety of engaging speakers, lots of networking, strong support from our sponsors and close - all of which created a great buzz and some powerful learning.

The highlight for me was the awards dinner where we once again celebrated the professional excellence of our members in style. It was good to see that the new Awards format, which was introduced last year is now well bedded-in, providing a fitting tribute and backdrop to this year's impressive nominees and winners.

I'm also very pleased that the Certification Programme pilot and testing has just been successfully completed. This critical project is tracking along well for the anticipated launch later this year.

Last month we completed a short survey on the Registered Professional Surveyor programme. We had a great response and have received some very valuable feedback. Thank you to everyone who took the time to complete the survey.

Ashley Church, CE.

CELEBRATION TIME!



Congratulations to all the 2022 Award Nominees and Recipients!

In a night to remember, the 2022 Professional Excellence Awards, Examination Awards and the Cadastral Survey of the Year Awards were announced at the black-tie event sponsored by GSI Partners. The dinner was held at the glamorous Rydges Hotel in Rotorua as part of the conference. This was our second celebration of members' outstanding service to the industry under the refreshed award programme introduced in 2021.

[See who received awards.](#)

CERTIFICATION PROGRAMME



The Certification Programme is progressing well with the completion of a successful Pilot in July. Thirty two candidates took part, 12 in Land Development Engineering and 20 in Engineering Surveying.

All three Certification programs, Land Development Engineering, Engineering Surveying and General Professional were tested and piloted. S+SNZ Council are now reviewing the summary report prior to the programme moving onto the next phase.

CONTINUING PROFESSIONAL DEVELOPMENT

A large, bright yellow speech bubble graphic. Inside the bubble, the words 'UPCOMING' and 'EVENTS!' are written in a bold, yellow, sans-serif font. The bubble has a white outline and a small tail pointing towards the bottom right.

**UPCOMING
EVENTS!**

Registrations for the following events in August and September are open.

Earthquake-prone Marae: Whanau Based Solutions - 30 August

Earthquake-prone buildings have hit the headlines in recent years. But what happens when a community has deep ancestral, spiritual and emotional attachment to buildings deemed 'earthquake-prone'? A team led by Prof. Regan Potangaroa of Massey University is working to provide solutions to this complex problem. [Register here](#)

S+SNZ Practice Note and Best Practice Guide for Land Surveying - 9 September

The NZ Guide to Temporary Traffic Management has been written to enable companies and organisations to identify and manage safety risks specific to the activity they are undertaking, and the mitigation measures they have assessed to be appropriate. [Register here](#)

Social Vulnerability in Disasters - 15 September

Who is being left out of our efforts to prepare for disasters? A team of researchers led by Dr Denise Blake (Te Herenga Waka Victoria University of Wellington) and Dr Shiloh Groot (The University of Auckland) are investigating the impacts of disasters on vulnerable lives. [Register here](#)

Developing Safety Through High Performance Culture - 30 September

Gain an understanding of ways in which organisational culture and safety performance are inextricably linked, as well as four key levers which work together to promote worker engagement and a high performance culture. [Register here](#).



SAVE THE DATE - ENGINEERING SURVEYING AND POSITIONING & MEASUREMENT WORKSHOP ON TRACK FOR NOVEMBER

This well anticipated one-day workshop is being held in Christchurch on **Friday, 18 November 2022**. This annual event is a joint S+SNZ Stream initiative providing a unique opportunity for technical development and networking.

[Register now](#) for this event as tickets are limited and watch out for the release of the programme in September.



IBSC Recognised S-5B Hydrographic Surveyor and S-8B Nautical Cartographer Program 2022 Enrolments.

Following the success of the 2021 deliveries of the IBSC* Recognised S-5B Hydrographic Surveyor and S-8B Nautical Cartographers Programs, IIC Academy is pleased to announce that enrolments are now open for the 2022 deliveries of these Programs.

The S-5B Hydrographic Surveyors Program will be delivered again in partnership with Deakin University. This course commences Sep 22 and comprises 13 weeks of theoretical training and 7 weeks practical and assessment. For this delivery IIC and Deakin are excited to team with O2 METOCEAN to allow the Practical components of the Program to be run at the O2 facilities in Fremantle, allowing easier access to students from Western Australia. If interest is strong enough, two Practical deliveries in Australia will be considered, with the second intended for delivery at Deakin's Warrnambool VIC campus.

The S-8B Nautical Cartographers Program will be delivered as a 22-week Global Delivery, maximising online learning methods and commencing Sep 22. This Programme provides students with the necessary theoretical and practical knowledge and skills required to undertake Nautical Chart production.

If you are interested in attending either program or wish to obtain more information please drop me a line at david.crossman@iictechnologies.com or hydrographicsurveyor@iicacademy.com.

Further details on the Programs can also be found at:

<http://iicacademy.com/>

MEMBERSHIP



October Professional Exam

Candidate's projects are due to be received by National Office by c.o.b 30 August. The final exams will be held 18 & 19 October.



Are You Maximising Your Membership Listing?

The S+SNZ website has several [member directories](#) that can be used as a tool to promote yourself and your business. You can control your privacy settings and add a business profile. Log-in to www.surveyspatialnz.org.nz, click on **DASHBOARD** and use the menu to update or add a profile and change your privacy settings



Traffic management - Practice Note & Best Practice Guide for Land Surveying

S+SNZ, in conjunction with CSNZ, LINZ and external traffic management consultants have prepared three documents for S+SNZ members to use. See the link below.

[More Detail](#)

[Log-in to your Dashboard](#)

[View the documents](#)

MEMBERSHIP FEES



Thank you to everyone who has paid their 2022-23 membership fee.

The invoices were sent out in early July and are now overdue for those who haven't yet paid. The easiest way to pay is to login to

www.surveyspatialnz.org and

select *Dashboard/Account Balance*. This will take you to the secure payment system. If you didn't receive your invoice, you can find it under the

Emails menu or email N.O at

admin@surveyspatialnz.org .

CAREER OPPORTUNITIES



SURVEY AND SPATIAL'S ONLY PREFERRED RECRUITMENT PARTNER

**Multiple job opportunities NZ-wide.
Contact us now for a confidential
chat & FREE salary check.**

Contact Sean Buck:
027 587 5726
sean@eighty4recruitment.com

Eighty4
— RECRUITMENT —

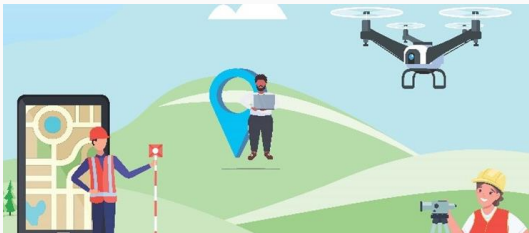
Survey
and Spatial
New Zealand
Diamond Partner

Recently listed career opportunities in the sector:

- [UAV/ Drone Pilot or Survey Skills and keen to learn UAV!](#) Fox and Associates, Christchurch
- [Applications Engineer, Rotational Development Program, Geo/Survey/Civil](#), Trimble, Christchurch
- [Subdivision Project Manager, Licensed Cadastral Surveyor, Survey Technician](#), Surveying Services, Waikato, Coromandel, BOP
- [Licensed Cadastral Surveyor or Technician](#), Planscapes Ltd, Nelson
- [Experienced Survey Technician or Graduate Surveyor](#), Absolute Land, Southland
- [Surveyor](#), Chester Consultants, Auckland

See the full list of opportunities on the [Jobs Board](#).

BEST PRACTICE



PROFESSIONAL PRACTICE CADASTRAL CORNER

A revised version of [Cadastral Survey Guidelines for CSR 2021](#) has been published along with an [Updated LINZ Guidance](#) note. This item and earlier articles are available [here](#).



LEGISLATIVE CASE NOTES

The August [Case Notes](#) covering diverse situations associated with subdivision, development and land use activities from around the country are available.

Read the full notes and earlier case notes [library here](#).

COVID-19 INFORMATION AND RESOURCES



[HELP IF YOU ARE SELF-ISOLATING](#)

COVID-19 INFORMATION

For more information on how to operate your business during the COVID-19 outbreak, visit

covid19.govt.nz

Information is also available at business.govt.nz and the S+SNZ Covid-19 [resource page](#).

Please take care and stay safe.



Copyright © | Survey and Spatial New Zealand | All rights reserved.

Our Mailing Address: PO Box 5304, Lambton Quay, Wellington 6145. www.surveyspatialnz.org

Want to change how you receive these emails?

You can [update your preferences](#) or [unsubscribe from this list](#).