

[View this email in your browser](#)



[UPDATE DETAILS](#)



Just one more week until conference!

With just over a week until the Rotorua conference starts, we're excited. Not only because we're actually able to bring this great event to you, but also, because of the networking opportunities it allows. These opportunities are not only important for members, but also our partners and supporters

A huge thanks to all the organisations that once again are making such a great conference happen by supporting us. If you're attending the conference, please take some time to check in with all the sponsors and catch up on the latest technologies and service offerings.

Once again, we will be announcing our Professional Excellence Award winners at the Awards dinner on 2 August. It's great to see so many outstanding professionals being recognised and I look forward to seeing you there when the winners are revealed.

Preventing the spread of Covid cases is of utmost importance and in the interests of everyone's health and safety, face masks and hand sanitiser will be available for everyone to use throughout the venue. We have a conference Test and Attend policy, requiring attendees to complete a RATS test each morning before attending sessions.

Of course, apart from Conference, there are several other important projects being worked on right now. The certification pilot for land development engineering and engineering surveying has been underway since July and, as part of that programme of work, we are also undertaking a short survey to gain an insight into members' views on RPSurv. Please take time to complete this very brief but important questionnaire at <https://www.surveymonkey.com/r/2022rpsurv>.

I look forward to catching up with you in Rotorua.

Ashley Church, CE.

PS – many thanks to those of you who have already paid your 2022/23 membership fee. If you haven't received your invoice, or have any other questions, please feel free to contact us for assistance.

CONFERENCE 2022



One week to go!

See the full [programme](#) to plan and maximise your time at the conference. We have an exciting range of over 20 presenters, view them here surveyspatialnzconference.org. The theme, 'Turning Up The Heat', will focus on the future and challenges in regional areas, which include climate change and developments outside of Auckland.

AWARDS

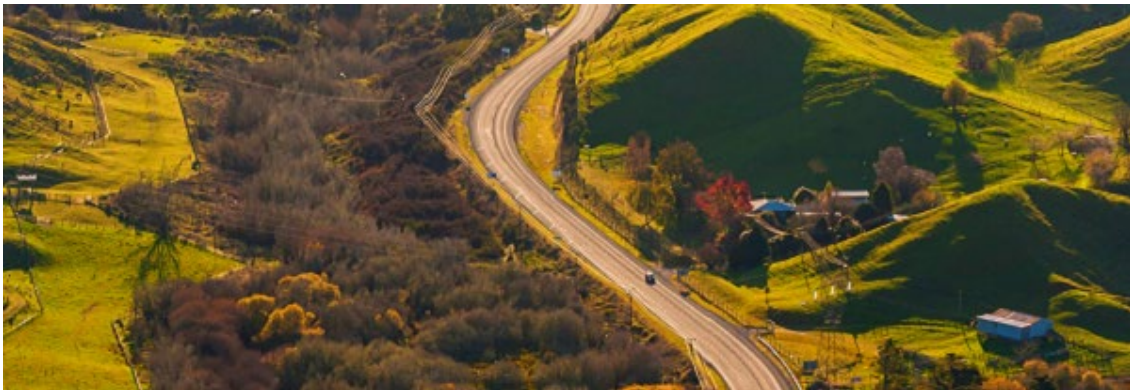


**Entries for the 2022 Spatial Excellence Awards have been extended to
25 July**

Nominations close on this date and once again, the *Asia Pacific Spatial Excellence Awards (APSEA)* [platform](#) is being used to collect entries.

For categories and how to enter visit [Spatial Excellence Awards](#).

ADVOCACY



NATIONAL TRAFFIC MANAGEMENT PRACTICE NOTE

Waka Kotahi/NZTA are currently implementing changes to the temporary traffic management system in New Zealand and have developed a Guide to Temporary Traffic Management (NZGTTM), which will replace the current Code of Practice for Temporary Traffic Management (CoPTTM).

S+SNZ, in conjunction with CSNZ, LINZ and external traffic management consultants have prepared the following documents for S+SNZ members to use:

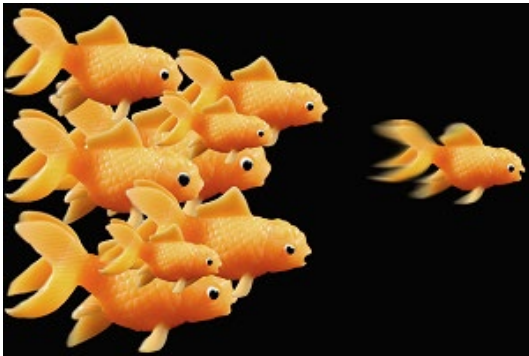
- Practice Note and Best Practice Guide for Land Surveying
- Generic Traffic Management Plan Proforma
- Engineering Exception Decision and TMD's for submission with above proforma.

The documents can be found here:

[S+SNZ Practice Note & Best Practice Guide for Land Surveying](#)

S+SNZ are currently arranging a webinar to discuss implementation of the Practice Note, and will send out notice once a time and date have been confirmed.

MEMBERSHIP



Are You Maximising Your Membership Listing?

The S+SNZ website has several [member directories](#) that can be used as a tool to promote yourself and your business. You can control your privacy settings and add a business profile. Log-in to www.surveyspatialnz.org.nz, click on **DASHBOARD** and use the menu to update or add a profile and change your privacy settings.



Your Membership is Important!

The 2022-2023 membership invoices were sent out in early July. Prompt payment is always appreciated and thank you to everyone who has already paid. Please check your junk or clutter folders if the email doesn't turn up or alternatively you can always find it and pay the invoice in your *Dashboard/Account Balance* when logged into www.surveyspatialnz.org.

CONTINUING PROFESSIONAL DEVELOPMENT



WEBINAR COMING UP - DIAGNOSING DATUMS IN SPATIAL DATASETS

19 August 2022, 10AM-11.00AM

When working with datasets from many sources the data looks right in isolation but as soon as we add the base map or other data it does not seem to be in the correct location, or it is slightly offset. How do we diagnose what the issue is, and which dataset is causing the problem?

[Register here](#)



OCTOBER PROFESSIONAL EXAMINATION

If you have registered for this exam there are some key dates coming up in August:

- **16 August 2022** - Application for Registration closes at 5pm
- **30 August 2022** - Candidate projects must be received by National Office
- **28 September 2022** - Vetting of projects completed and Interview Acceptance letters sent to Candidates
- **18 & 19 October 2022** - Physical Exams conducted.

[More Detail](#)



CERTIFICATION PROGRAMME PILOT

If you are taking part in the *Certification Programme Pilot* the registration link is below.

[Register Here](#)

**TIME FOR
FEEDBACK!!**

SURVEY UNDERWAY- REGISTERED PROFESSIONAL SURVEYOR

A short survey on the *Registered Professional Surveyor (RPSurv)* certification is underway with members to help S+SNZ Council understand the current position and help with planning for the upcoming year.
To take part, use the link below.

[Link to survey](#)

CELEBRATIONS



Winner of the Kairūri Community Trust Stirling Scholarship Announced.

Congratulations to Francesca Robb - winner of the inaugural Kairūri Community Trust Stirling Scholarship. Francesca is a final year Bachelor of Surveying (Hons) student at Otago University.

The scholarship includes a \$2500 cash prize plus support to attend the upcoming Survey and Spatial NZ conference being held in Rotorua, early August.

At the conference Francesca get the opportunity to share her submission titled '*The Challenges for Early Year Survey Graduate in a Rapidly Evolving Market*'.

[Read more](#)



Do you know a member who is celebrating something important?



We like to celebrate with members so please send us the details -

admin@surveyspatialnz.org.

CAREER OPPORTUNITIES



SURVEY AND SPATIAL'S ONLY PREFERRED RECRUITMENT PARTNER

**Multiple job opportunities NZ-wide.
Contact us now for a confidential
chat & FREE salary check.**

Contact Sean Buck:
027 587 5726
sean@eighty4recruitment.com

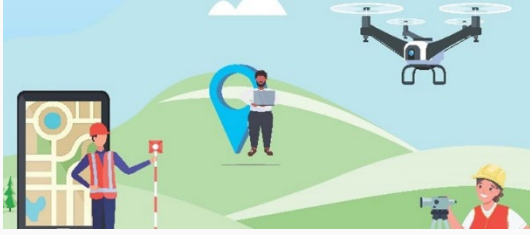
Eighty4
— RECRUITMENT —

 Survey
and Spatial
New Zealand
Diamond Partner

Recently listed career opportunities in the sector:

- [Senior Surveyors](#), Maven, Queenstown and Matamata
- [Survey Technicians](#), Maven, Queenstown and Timaru -
- [Licensed Cadastral Surveyor](#), Lysaght Consultants, Hamilton
- [Licensed Cadastral Surveyor/Technician](#), Cato Bolam, Orewa
- [Cadastral Senior Survey Advisor](#), LINZ
- [Experienced Survey Technician or Graduate Surveyor](#), Absolute Land, Southland

See the full list of opportunities on the [Jobs Board](#).



PROFESSIONAL PRACTICE CADASTRAL CORNER

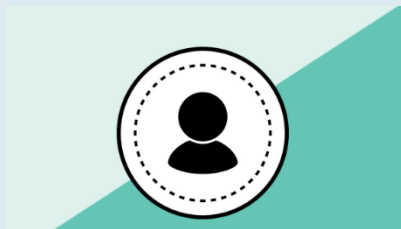
Read the latest Cadastral Stream's article on [*Integrated Guidance*](#). This item and earlier articles are available [here](#).



LEGISLATIVE CASE NOTES

The [July Case Notes](#) covering diverse situations associated with subdivision, development and land use activities from around the country are available. Read the full notes and earlier case notes [library here](#).

COVID-19 INFORMATION AND RESOURCES



[HELP IF YOU ARE SELF-ISOLATING](#)

COVID-19 INFORMATION

For more information on how to operate your business during the COVID-19 outbreak, visit covid19.govt.nz

Information is also available at business.govt.nz and the S+SNZ Covid-19 [resource page](#).

Please take care and stay safe.



Copyright © | Survey and Spatial New Zealand | All rights reserved.

Our Mailing Address: PO Box 5304, Lambton Quay, Wellington 6145. www.surveyspatialnz.org

Want to change how you receive these emails?

You can [update your preferences](#) or [unsubscribe from this list](#).